

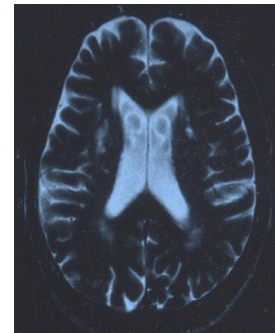


PREVENT

Research Programme

Welcome to the first instalment of the PREVENT Research Programme newsletter! We will be sending you a newsletter every few months to keep you updated on the progress of the study and keeping you informed of any interesting research around Dementia prevention. In this edition we will be updating you on the progress of the study so far and the future plans for PREVENT.

On behalf of all of the PREVENT study team we would like to take this opportunity to thank all of you for taking part in the study so far, we are extremely grateful to you for taking the time out to undergo all of the study assessments and we hope that you have enjoyed taking part. Since opening the study for recruitment in February 2014 we have now recruited 110 participants into the study. For those of you who consented to the spinal fluid sample sub-study we will be in touch over the coming months to arrange this with you.

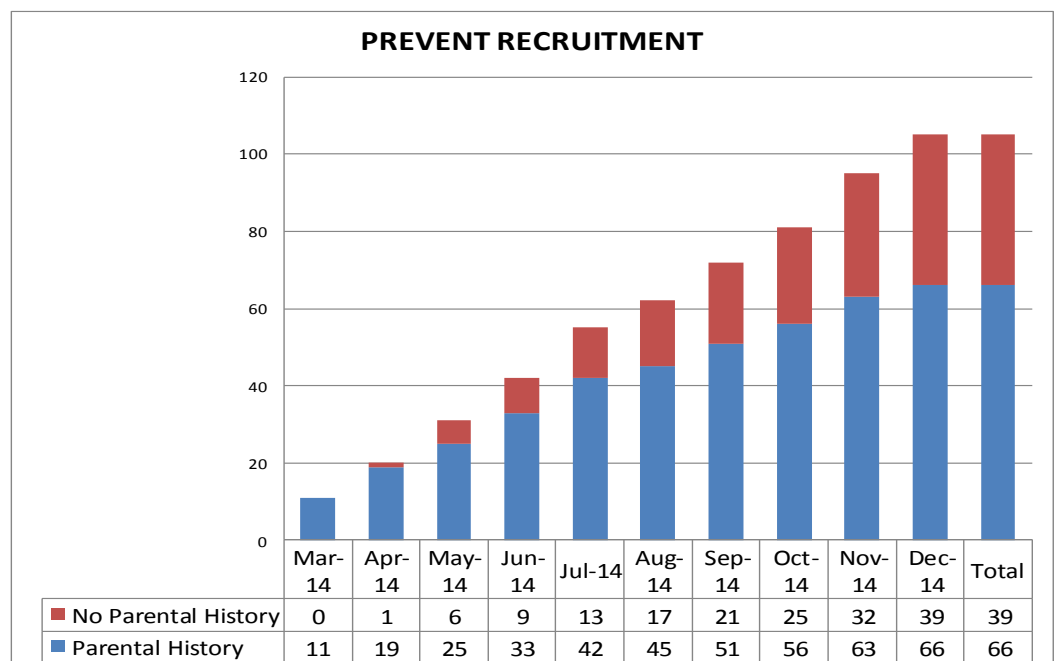


Future developments for PREVENT

Over the coming months we hope to be able to expand the study further and open up additional sites across the UK. This will allow the opportunity for many other individuals across the UK to take part in the study without having to travel to London. The proposed locations are Oxford, Cambridge and Edinburgh.

Recruitment:

The graph shows the recruitment for the study up to the end of December 2014. The number of participants involved in the study who have a parental history of Dementia and the number who do not have a parental history are shown. We now need to recruit as many participants as possible who do not have a parental history of Dementia.



Follow [@AD_PREVENT](#) on Twitter for study updates and relevant Dementia Prevention news.

Data analysis:

Recently we set up an electronic database to store all of the data you provided us with when carrying out the various study assessments. Now that the database is set up we are starting to think about carrying out an interim analysis. We have now reached 100 participants recruited into the study and therefore plan to carry out this interim analysis in early 2015. We will also take the opportunity at this point to review the MRI imaging data that we have collected so far. Any findings of interest will be shared with you in the next PREVENT Research Programme Newsletter.

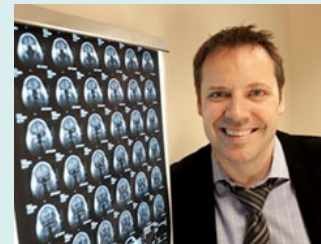


Feedback:

We hope that you enjoyed taking part in the first round of assessments for the study. If you do have any feedback for the study team about your time at the clinical trials unit or the MRI unit at Hammersmith hospital then please do get in contact with the team as we would like to make sure everyone has a positive experience when taking part in the study.



**Professor Craig Ritchie—Professor of the Psychiatry of Aging
University of Edinburgh:**



Professor Ritchie is the principal investigator for the PREVENT Research Programme. He has recently taken up a new position at the University of Edinburgh as Professor of Psychiatry in Aging. His new role in Edinburgh will allow him to further his research into Dementia prevention. He will continue his work on the PREVENT Research Programme supporting both sites in London and a new site based in Edinburgh.

In addition to this Professor Ritchie will be launching a European project aiming to establish clinical trials for Alzheimer's disease prevention.

Volunteers still needed!

We are still looking for people to take part in the study who do not have a parental history of Dementia so if you do know of any friends or family members who might like to take part then please do get in touch with Katie via email at Katie.wells@imperial.ac.uk or call 020 8483 1823.